



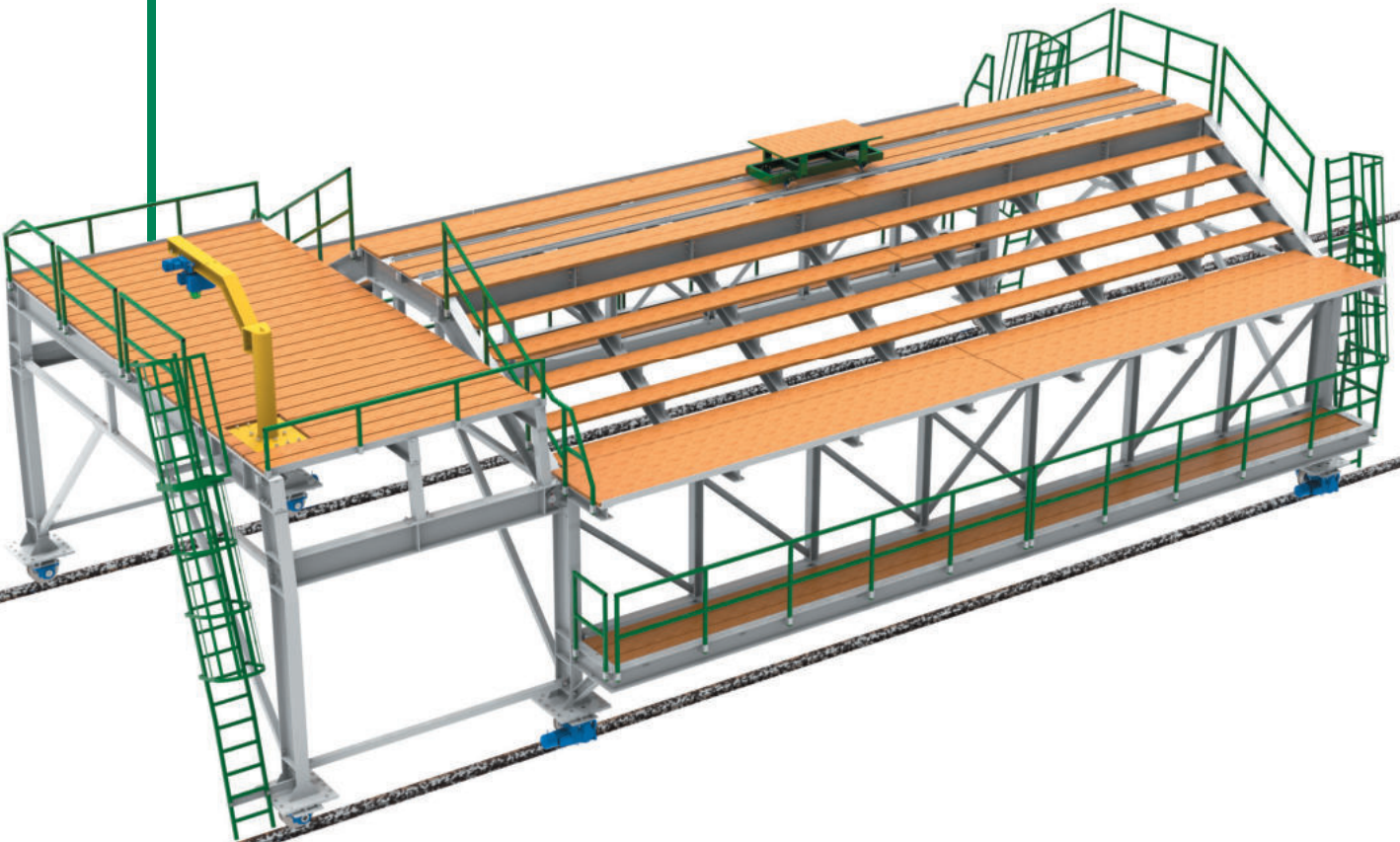
Formwork Carriages, Handling Structures

and Other Specialized Equipment for Underground Construction

 Geotra

We design and manufacture specialized equipment for work during the tunneling and tunnel concreting. Our range includes formwork carriages and handling structures, mining platforms, various types of conveyors and other necessary equipment. The combination of first-class materials, proven parts and in-house manufacturing ensures long-term and reliable service life of our equipment, even in demanding conditions.

Our engineers design each piece of equipment taking into account specific requirements of each individual customer. We design our formwork for a wide variety of tunnel profiles and required loads to meet the requirements of your project.

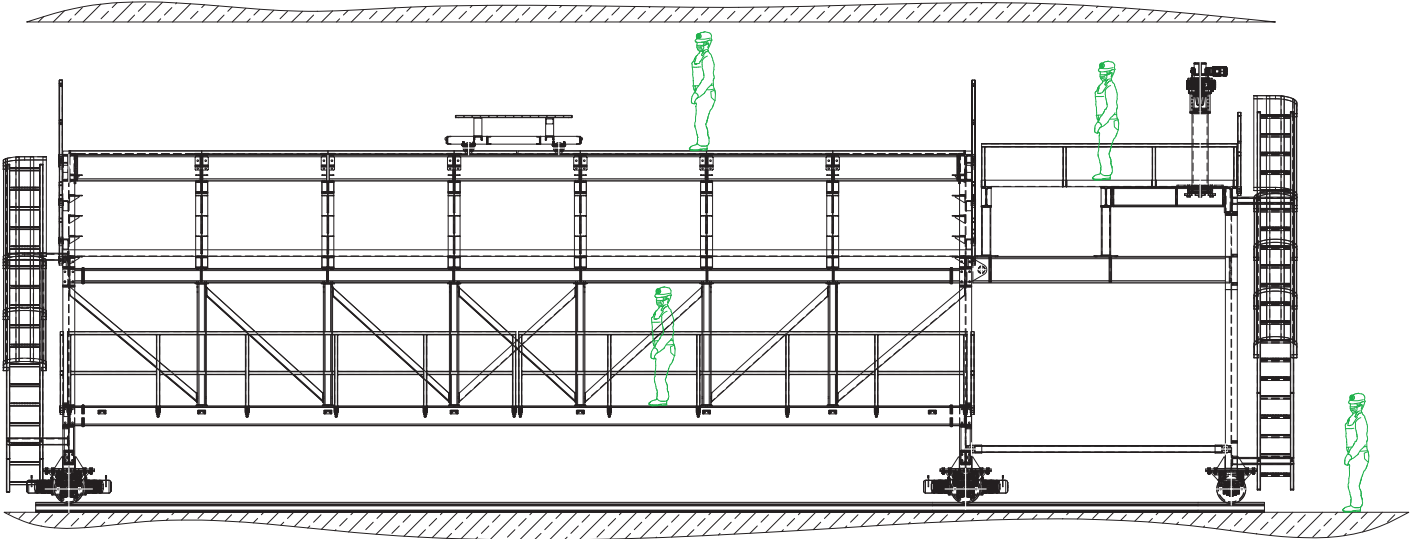




Formwork Carriages, Handling Structures and Other Specialized Equipment for Underground Construction

Geotra

Technical Information



Weight and dimensions	according to project and equipment type
Maximum inclination	up to 45°
Operating voltage	220 or 400 V / 50 Hz
Drives	hydraulic / electric / manual
Control	manual / remote radio control
Accessories	based on customer's requirements

About the Company

Many people associate the **OSTROJ** brand with mining machinery for underground coal mining. Years of experience in the construction of mining machinery for the mining industry on all continents of the world give the prerequisite for overcoming any obstacles. In fact, our team of designers has solved a lot of extreme requirements, such as **mining steep seams with fully-mechanized mining complexes, mining in the subsoil beyond the Arctic Circle or**

in dangerous explosive environment. We therefore rely on in-depth technical knowledge and the ability to adapt to the requirements of individual customers. In this manner, our portfolio has been also extending to machines for underground construction. Our references include, for example, **record-breaking order for a 34m long backflow flap valve** for the extensive modernization of the Gabčíkovo Dam for the Metrostav company.





Geotra

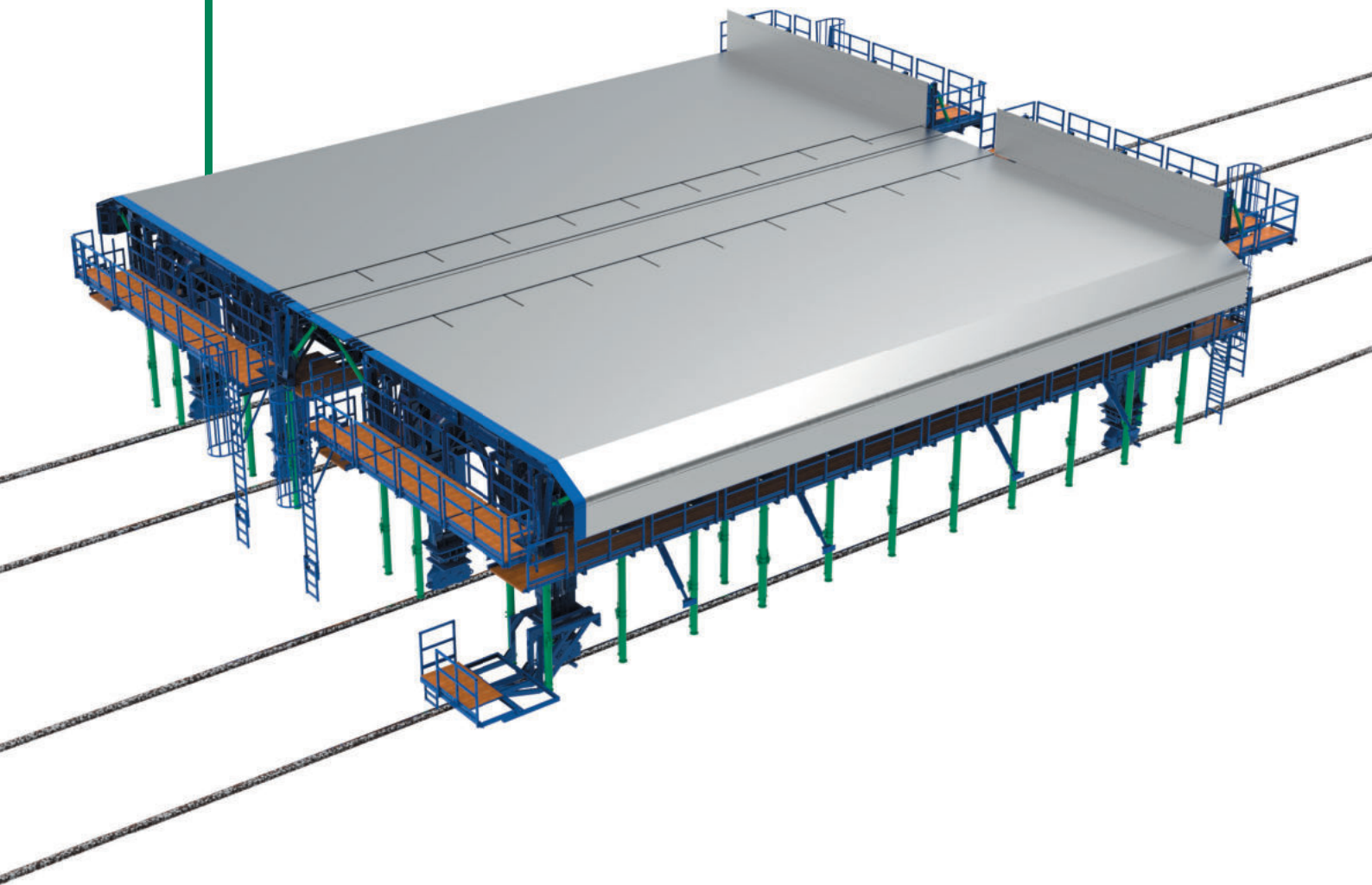
Mobile Steel Formwork

for the Concreting of Excavated Tunnels

Our mobile steel formwork is designed for the concreting of tunnel profiles of excavated tunnels. The combination of first-class materials, proven parts and in-house manufacturing ensures long-term and reliable service life of our equipment, even in demanding conditions.

Our engineers design each piece of equipment taking into account specific requirements of each individual customer.

We design our formwork for a wide variety of tunnel profiles and required loads to meet the requirements of your project.



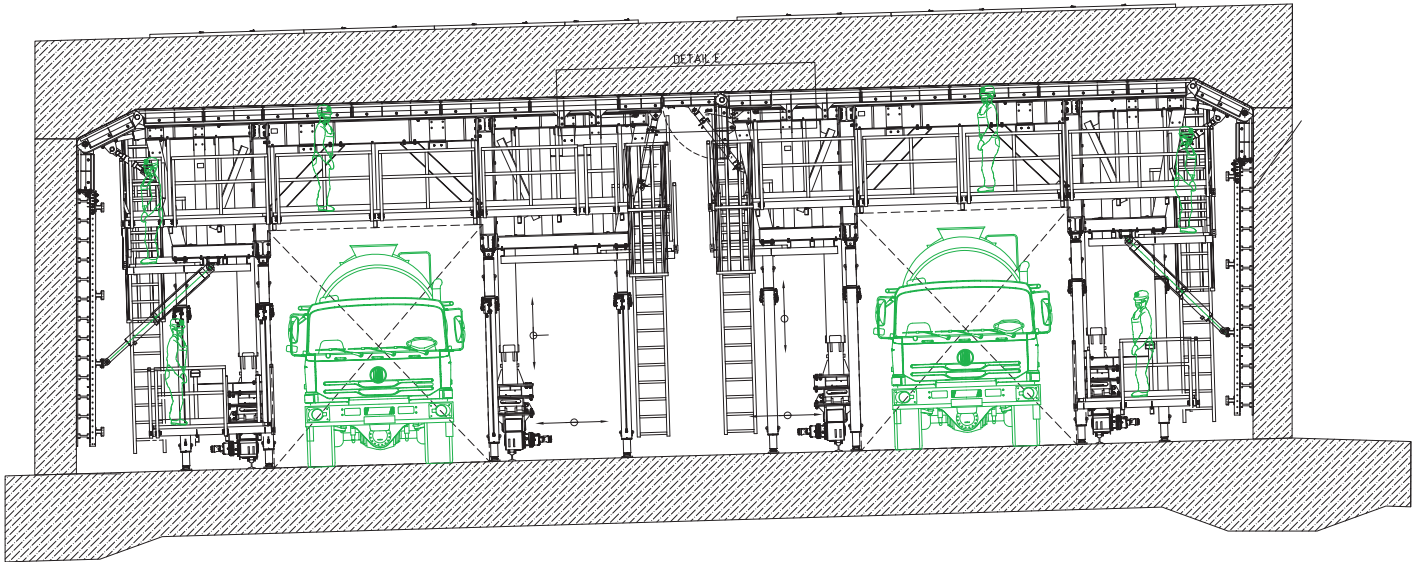


Geotra

Mobile Steel Formwork

for the Concreting of Excavated Tunnels

Technical Information

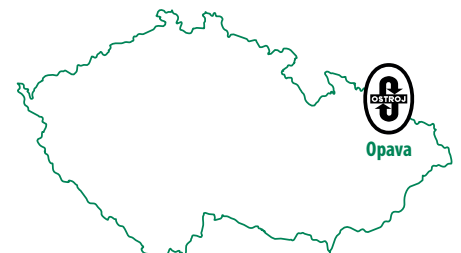


Weight and dimensions	according to project
Length	usually 10 – 20 m (longer on request)
Hight adjustment	200 – 2200 mm (higher on request)
Maximum inclination	up to 5°
Operating voltage	400 V / 50 Hz
Drive	hydraulic / electric
Control	manual / remote radio control
Accessories	Depending on customer requirements (lighting, cranes, connection to the system formwork, etc.)

About the Company

Many people associate the **OSTROJ** brand with mining machinery for underground coal mining. Years of experience in the construction of mining machinery for the mining industry on all continents of the world give the prerequisite for overcoming any obstacles. In fact, our team of designers has solved a lot of extreme requirements, such as **mining steep seams with fully-mechanized mining complexes, mining in the subsoil beyond the Arctic Circle or**

in dangerous explosive environment. We therefore rely on in-depth technical knowledge and the ability to adapt to the requirements of individual customers. In this manner, our portfolio has been also extending to machines for underground construction. Our references include, for example, **record-breaking order for a 34m long backflow flap valve** for the extensive modernization of the Gabčíkovo Dam for the Metrostav company.





Geotra

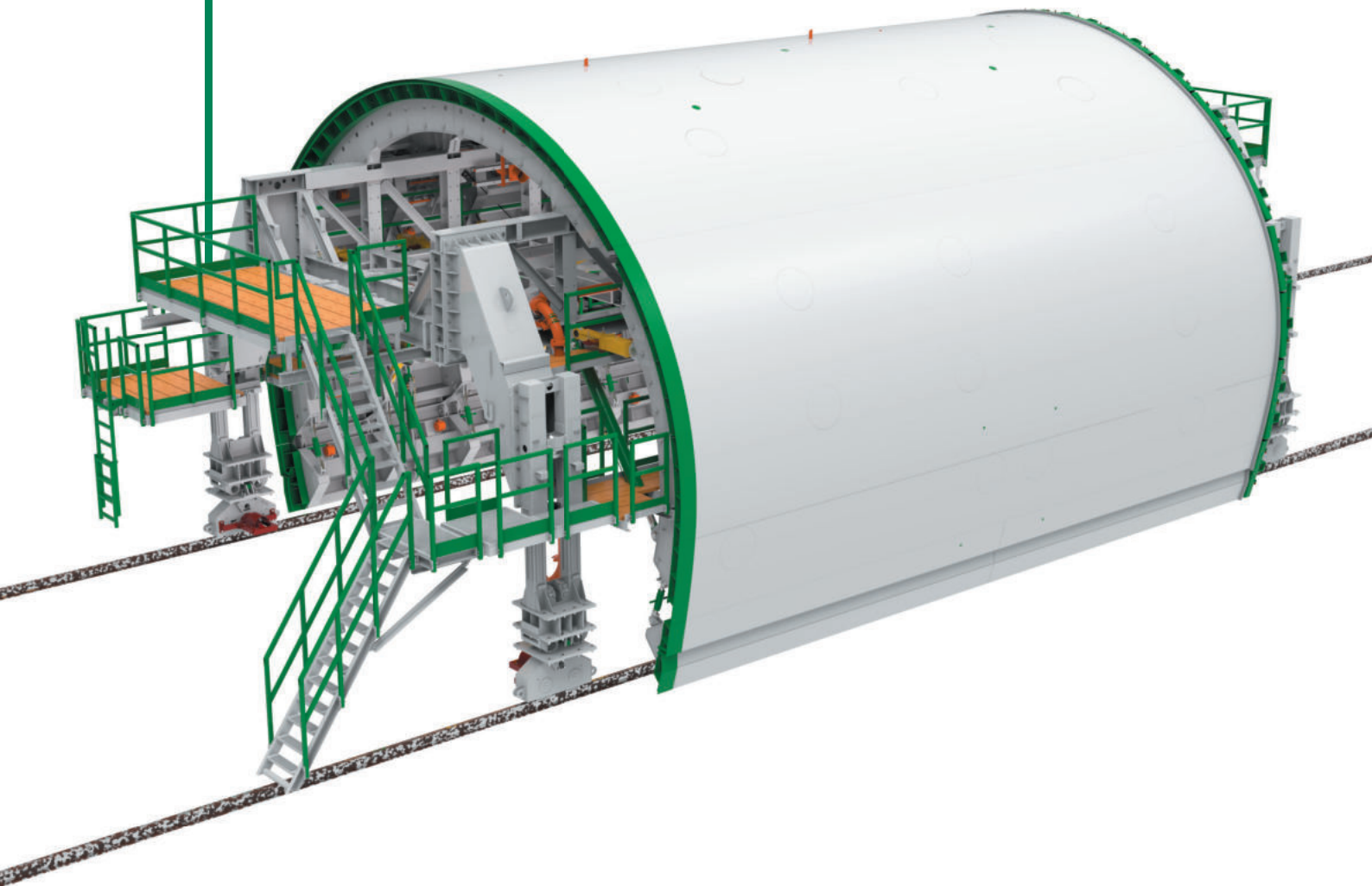
Mobile Steel Formwork

for Secondary Lining of Bored Tunnels

Our mobile steel formwork is designed for the concreting of secondary tunnel lining. The combination of first-class materials, proven parts and in-house manufacturing ensures long-term and reliable service life of our equipment, even in demanding conditions.

Our engineers design each piece of equipment taking into account specific requirements of each individual customer.

We design our formwork for a wide variety of tunnel profiles and required loads to meet the requirements of your project.



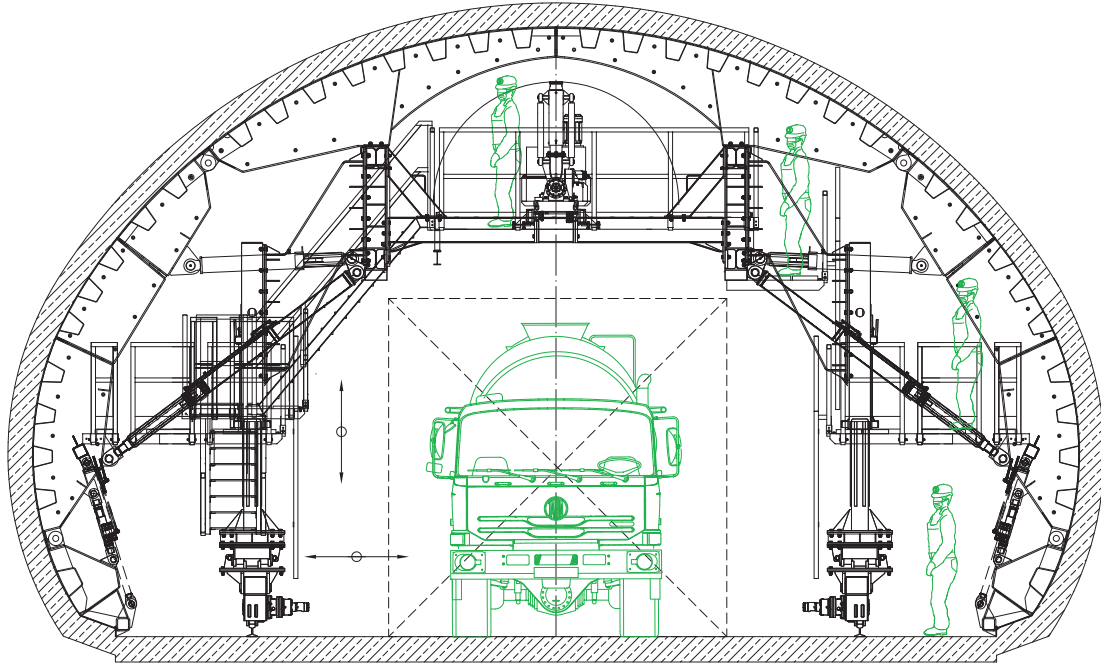


Geotra

Mobile Steel Formwork

for Secondary Lining of Bored Tunnels

Technical Information



Weight and dimensions	according to project
Length	usually 6 – 12 m (longer on request)
Maximum inclination	up to 5° special applications up to 45°
Operating voltage	400 V / 50 Hz
Drive	hydraulic / electric
Control	manual / remote radio control
Accessories	depending on customer requirements (lighting, cranes, connection to the system formwork, etc.)

About the Company

Many people associate the **OSTROJ** brand with mining machinery for underground coal mining. Years of experience in the construction of mining machinery for the mining industry on all continents of the world give the prerequisite for overcoming any obstacles. In fact, our team of designers has solved a lot of extreme requirements, such as **mining steep seams with fully-mechanized mining complexes, mining in the subsoil beyond the Arctic Circle or**

in dangerous explosive environment. We therefore rely on in-depth technical knowledge and the ability to adapt to the requirements of individual customers. In this manner, our portfolio has been also extending to machines for underground construction. Our references include, for example, **record-breaking order for a 34m long backflow flap valve** for the extensive modernization of the Gabčíkovo Dam for the Metrostav company.

